



Junior (K-2) Autumn Vacation Care 2024



www.bondibasc.com

bondiaftercare@gmail.com

Ph. 0458 484 178 (SMS Only) 0409 727 927

Monday 15th April

Ranger Jamie All Day Science Fun



Join us in an action-packed day of science! Race your friends in billy cart races, create lava lamps, see how high you can launch a rocket, create your own mystery slime and more!

Learning outcome: 4.2

Tuesday 16th April

Lollipop's Playland

Excursion - Parramatta



Join your friends and explore the massive ball pit, giant slides, teacup rides, climbing frames, jumping castles and more in this highly requested unique play experience!

Learning Outcome: 1.2

Excursion Fee: \$43

Depart: 10:00am Return: 2.45 pm

Wednesday 17th April

Tennis Stars

Thanks Jack T and Olivia Y



Learn a range of skills and discover your inner tennis superstar, in this fun and active morning

run by Go Go Sports.
Learning outcome: 3.2

Crystal Treasure Hunt

Join Educator Viv on an amazing adventure! Dig for fossils and crystals to find hidden treasures to take home!

Learning outcome: 4.4



Thursday 18th April Outdoor Cubby House Adventure

Excursion - Centennial Park



Explore the great outdoors with your friends and work as a team to build your own cubby house using natural loose parts!

Learning Outcome: 2.4

Excursion Fee: \$41

Depart: 9:30am Return: 2:00pm

Friday 19th April

Brazilian Drum and Dance Carnival

Have fun while learning Brazilian drumming and dancing with experienced teachers!



Learning Outcome: 2.2

Tag Your Bag



Join Educator Aurora and make your backpack easy to find and stand out by creating your very own unique tag that reflects all that makes you, you!

Learning Outcome: 1.3

Monday 22nd April

Indigenous Healing & Nutrition

with Kirra from Bombora Tours

Taste, smell and feel bush tucker and medicine. Learn how these plants played an important role with Kirra's people and the animals that live around Greater Sydney.



Learning Outcome: 2.2

Make Yourself Move



Get active and express yourself through dance in this Zumba-inspired afternoon delivered by Educator Eddie.

Learning Outcome: 3.2

Tuesday 23rd April

Polar Bear & Penguin

Excursion - Sydney Opera House



Watch the story of an unlikely friendship between a Polar Bear and a Penguin. It's a tale of our time, infused with humour, friendship and fish!

Learning Outcome: 5.2

Excursion Fee: \$55

Depart: 10:30am Return: 2:00pm

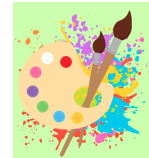
Wednesday 24th April

Frida Kahlo Art with Alexis

Thanks Singmin Family

Get creative and express yourself as Alexis (Viv C's Mum) guides us through a Frida Kahlo-inspired self-portrait workshop!

Learning outcome: 4.1



Gymnastrix

Thanks Morgan Family



Have fun while developing your flexibility & strength on trampolines, beams & bars.

Learning Outcome: 3.2

Thursday 25th April

Anzac Day

Public Holiday

BASC Closed

Friday 26th April

Movie Day

Excursion: Entertainment Quarter



Come along with your friends and enjoy the latest new release movie (rated PG) that comes with a popcorn treat.

Learning Outcome: 5.2

Excursion Fee: \$32.00 (includes popcorn)

Depart: 11.45 am Return: 3:30pm

Vacation Care Information

www.bondibasc.com

bondiaftercare@gmail.com

Ph. 0458 484 178 (SMS Only) 0409 727 927

Address	Bondi PS Wellington St, Bondi 2026	Opening Hours	8.00am – 6.00pm
Vacation Care Daily Fees	\$ 70.00 per child	Excursion Fees	See Program
BASC Annual Registration Fee	\$ 50.00 1st Child \$ 15.00 Sibling Rate	Late Fee (after 6pm)	\$20.00 per 15-minute block

Making a Booking

1. Login to the My Family Lounge app or BASC website.
2. Select 'CASUAL BOOKINGS'
3. Select drop down options
 - Child's Name
 - Service - Bondi Before & After School Care
 - **Room Type - VAC Junior K-1** or VAC Senior 2-6
4. Select the date you require.
 - **GREEN** - Date available
 - **PURPLE** - Successful booking
 - **RED** - Date unavailable - email BASC to be added to the waiting list.
5. Select the Save and Exit button if finished, if you have additional children to add, repeat from Step 3

What to Bring

- Light carry bag
- Recess & Lunch
- Water Bottle
- A wide-brimmed hat
- Wet weather gear
- Comfortable, sun smart clothes
- Enclosed shoes
- Please check program for additional requirements

*Please label all belongings clearly with your child's name (clothing, shoes, lunch box, water bottles etc.)

*Although staff will remind children to apply sunscreen throughout the day, parents can help BASC in following the Cancer Council Sun Safe Policy by ensuring that children are wearing sun-safe clothing and have applied sunscreen before arrival.

On site activities - Please arrive with your child before 10.00am and sign in on the QK Kiosk.

Off site Excursions - Please arrive with your child at least 30 minutes before the departure time stated on the program, for the important excursion safety discussion.

Payments - All payments are automatically processed on the following Monday after a booking, through our direct debit system.

Cancellations - All absences will be charged at full fees, including excursion fees, unless cancelled prior to the start of week 9 of term, via the MFL app.

Child Care Subsidy - The fees outlined above are per day before CCS has been applied. Sorry no half days.

Ratios - Educator to child ratios are 1:15 for incursions & 1:8 on excursions. Risk assessments for excursions are available on request.

Signing In & Out - Please ensure you sign your child in & out Check the program for activities wrap up times (usually 3.30pm), followed by afternoon tea.

Please inform BASC educators of any different pickup arrangements you have made.

As the weather is unpredictable, unforeseeable circumstances may arise that require changes to be made to our program on the actual day.

Staff cannot take responsibility for any property that children bring from home, so if it is precious, think carefully before bringing it in.