

SUMMER VACATION CARE

Senior Program Yrs 3-6



Monday 13th Jan

Underworld Laser

Excursion- Menai
Thanks Roy G



Work as a team while you develop your hand-eye coordination in fast-paced solo and team missions.

Learning Outcome: 5.1

*Please wear enclosed shoes

Excursion Fee: \$38.00

Depart: 9am Return: 3.15pm

Tuesday 14th Jan

Art Attack

A hands on art experience inspired by the Rene Magritte exhibit.



Learning Outcome: 4.2

Wild Water Wars

Thanks Lily Mae N



Cool down this summer with target games, sponge toss, water relays and a slip n slide!

Learning Outcome: 3.2

Wednesday 15th Jan

Tru Ninja

Excursion- Penrith



Explore this revolutionary obstacle playground with your friends. bringing fun, fitness and adventure together.

Learning Outcome: 5.1

*Please bring socks

Excursion Fee: \$49.00

Depart: 9.30am Return: 3.15pm

Thursday 16th Jan

Skateology

You will be kick-flipping your skateboard when the skateology crew visit BASC.



Learning Outcome: 3.2

Cookie Decorating



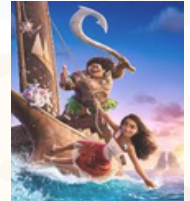
Create your very own unique cookie design, then munch away!

Learning Outcome: 4.1

Friday 17th Jan

Movie Day

Excursion - Moore Park EQ



Come along with your friends and enjoy the latest new release movie (rated PG) that comes with a popcorn treat.

Learning Outcome: 5.2

Excursion Fee: \$32.00

*Includes popcorn
Depart: 11.30am Return: 3.45pm

Monday 20th Jan

VR Quest

Excursion - Mascot



Enter the virtual world with your friends and try your best to complete the challenges put before your eyes.

Learning Outcome: 5.3

*Please wear enclosed shoes

Excursion Fee: \$48.00

Depart: 11am Return: 3pm

Tuesday 21st Jan

Learn to Weave

Thanks Moore Family



Use our native flora in this enthralling indigenous art/skill of weaving activity

Learning Outcome: 1.1

Cricket Skills

Thanks Gilbert Family



Let's explore one of Australia's most beloved sports. HOWZAT!!!

Learning Outcome: 3.2

Wednesday 22nd Jan

Stardust Circus

Excursion- Moore Park EQ



Come take your seats for this laugh-out-loud extravaganza of comedy and circus silliness.

Learning Outcome: 2.4

Excursion Fee: \$41.00

Depart: 9.15am Return: 2pm

Thursday 23rd Jan

Gymnastrix

Develop flexibility, balance & strength on tramps, vaults, beams & bars.



Learning Outcome: 3.2

Trivia



Which team will become trivia champions in this fun activity with all your favourite categories and prizes.

Learning Outcome: 4.2

Friday 24th Jan

Lets Go Surfing

Excursion - Bondi Beach

Thanks Roumanous Family



Immerse yourself in beach culture and improve your surfing and ocean skills in a safe, fun & supervised environment.

Learning Outcome: 2.1

Excursion Fee: \$47.00

Depart: 9am Return: 2pm

Monday 27th Jan

**Public
Holiday**

BASC CLOSED

Tuesday 28th Jan

Ranger Jamie Team Building



Join us on this fast-paced, hands-on team building fun day with billy cart racing, tower building, ball sports, blanket volleyball, water bucket challenge and tug of war.

Learning Outcome: 4.2

Wednesday 29th Jan

House of Wow

Excursion - Preston

Thanks Rigney Family



Home to some of the most exciting activities, jump into wall climbing then challenge your friends to a game of bowling. The fun never stops!

Learning Outcome: 2.1

Excursion Fee: \$51.00

Depart: 8.45am Return: 3pm

Thursday 30th Jan

Plentiful Plants

Get your hands dirty in the garden, digging, planting & watering. Take home your very own plant to care for and watch grow!



Learning Outcome: 1.1

Sports Gala

Get involved learning teamwork and hand eye coordination while having a blast. In Netball, AFL & dodgeball.



Learning Outcome: 4.1

Friday 31st Jan

Movie Day

Excursion- Moore Park EQ



Come along with your friends and enjoy the latest new release movie (rated PG) that comes with a popcorn treat.

Learning Outcome: 5.2

Excursion Fee: \$32.00

*Includes popcorn
Depart: 11.30am Return: 3pm



SUMMER VACATION CARE

Senior Program Yrs 3-6



Address: Bondi PS Wellington St, Bondi 2026

Opening Hours: 8.00am - 6.00pm

Daily Vacation Care: \$ 70.00 per child

Excursion Fees: See Program

BASC Annual Registration Fee: \$50.00 1st Child / \$15.00 Siblings

Late Fee (after 6pm): \$20.00 per 15-minute block

Make a Booking

1. Login to the My Family Lounge app or BASC website.
 2. Select '**CASUAL BOOKINGS**'
 3. Select drop-down options
 - Child's Name
 - Service - Bondi Before & After School Care
 - Room Type - **VAC Senior 3-6** or VAC Junior K-2
 4. Select the date you require.
 - **GREEN** - Date available
 - **PURPLE** - Successful booking
 - **RED** - Date unavailable - keep checking for availability.
 5. Select the Save and Exit button.
- *if you have additional children to add, repeat from Step 3



What to Bring

- Light carry bag
- Recess & Lunch
- Water Bottle
- A wide-brimmed hat
- Wet weather gear
- Comfortable, sun-safe clothes
- Enclosed shoes
- Please check the daily program for additional requirements



Vacation Care Reminders

- **On-site Activities:** Please ensure you arrive with your child before 10:00 am and sign in using the QK Kiosk.
- **Off-site Excursions:** Arrive with your child at least 30 minutes prior to the departure time indicated in the program for an essential safety discussion about the excursion.
- **Payments:** All payments will be automatically processed through our direct debit system on the Monday following your booking.
- **Cancellations:** Full fees, including excursion fees, will be charged for all absences unless canceled before the start of week 9 each term via the MFL app.
- **Child Care Subsidy:** The fees listed above are per day before the Child Care Subsidy (CCS) is applied. Please note that half-day bookings are not available.
- **Ratios:** The educator-to-child ratios are 1:15 for incursions and 1:8 for excursions. Risk assessments for excursions can be provided upon request.
- **Bookings:** All Vacation Care bookings should be made through the My Family Lounge casual bookings calendar.
- **Signing In & Out:** It is essential to sign your child in and out. Programmed activities conclude by 3:30 pm, followed by afternoon tea and options for children to engage in planned or spontaneous activities.
- Please notify BASC educators of any alternate pickup arrangements you have made for your child.
- Due to unpredictable weather, unforeseen circumstances may lead to changes in our program on the day.
- Staff cannot be held responsible for any personal items children bring from home; please think carefully before bringing anything precious.